



Worldwide Marketing & Sales

MAYPAK PACKAGING CO.,LTD.

Add:33shiji Rd,Mazhu Developing Zone,
Yuyao 315400,Zhejiang,China.

Tel:0086-574-62790606
Cell No.:0086-18657435151
Fax:0086-574-62790909
E-mail:sales@maypakcn.com
Http://www.maypakcn.com

Manufacturing Facility In Ningbo China

YUYAO S&M PACKAGING CO.,LTD.

Add:10 th Fangye Rd, Yangming Subdistrict,
Yuyao, Ningbo, Zhejiang Province,China

Tel:0086-574-62795578
Cell No.:0086-13958350674
Fax:0086-574-62790909
E-mail:sales@smcospack.com
Http://www.smcospack.com



www.chinacosmeticpacking.com



www.maypakcn.com

更优质，更专业，
更快捷

SERVICE NETWORK

MAYPAK的每一件产品，
都是美派团队用心凝聚的结晶；
我们用创新的设计理念，
高科技的生产设备，
专业的服务体系，
去诠释MAYPAK的态度，
去诠释每一个人的与众不同！

Yuyao Maypak Packaging Co.,Ltd. designs,develops
and manufactures plastic and metal spray
dispensers,packaging for cosmetic,personal care
and general merchandise industries. Our packaging
products include plastic and metal fine mist
sprayers,crimp sprayers,lotion pumps,treatment
pumps,airless dispensing containers,standard
triggers,mini trigger sprayers,glass,plastic and
acrylic bottles, plastic tubes and turned edge boxes.
We design and produce our own molds with
customized shapes,sizes,colors and decorations. Our
innovative designs and superior engineering
departments can develop new items quickly at
reasonable prices.

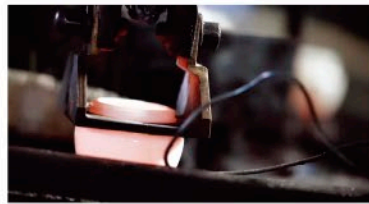
2006年

成立欣蒙生产基地以方枪、乳液泵、小喷雾、粉泵、塑料盖等为专业产品，打开了企业稳步发展新篇章。



In 2006, S&M PACKAGING CO., LTD. established a professional production base. The base mainly produces trigger sprayers, lotion pumps, fine mist sprayers, treatment pumps, and plastic caps.It opens a new chapter to promote the development of firm.

2013年



合资成立上海晶逸玻璃有限公司。为进一步拓展企业规模，强强联手，跨越发展的思路使得企业的品牌不断延伸和充实。

In 2013, Shanghai JingYi Glass co., Ltd. was formed as a joint venture, In order to further expand the scale of enterprises, join forces and leap development ideas made the firm's brand continue extending and enriching.

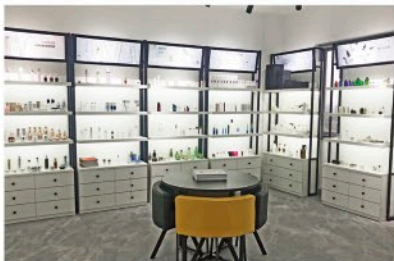
2021年

欣蒙生产基地和彩韵研发基地合并。
整合优势资源， 助力产业发展。

S&M packaging and CY center were merged. Integrate superior resources to promote industrial development.



2011年



成立美派营销中心。公司实施“质量塑造品牌，科技推动发展、服务赢得市场、文化回报社会”等战略，经过“VI设计竖形象、技术创新显实力、完善服务传品牌、和谐发展固根基”等运作,使企业稳步发展，为打造一个化妆品包材巨人奠定了基础。

In 2011, We set up MAYPAK CO., LTD. Through the operation of "VI design, scientific and technological innovation, improvement of brand service, harmonious development of solid foundation", the firm made steady progress and laid the foundation for the development of a cosmetics packaging giant.

2016年



成立彩韵研发中心。人才的吸引、技术的革新，发展为日用品类、护肤类、彩妆类等并举的生产研发大格局。

In 2016, CY center was established. Talent attraction and technological innovation deeply strengthened the development of daily necessities category, skin care category, make-up category and other concurrent large-scale production. It enhanced the firm to draw a competitive big picture.

显著的产品表现力

SUPERIOR EXPRESSIVENESS

Silk Screen Printing

We have mastered Silk Screen Printing this is an easy and effective use for design, all done in our own factories with cutting edge technology. Silk Screen printing can provide a powerful visual effect.

Water Transferring Printing

The water drape film has excellent tension and is easily applied to the product surface to form a graphic layer. The surface develops a distinctly different appearance almost as if it were spray painted. Draping on any shape of a design to solve the problems that come with stereoscopic printing. We have defined ourselves with the appearances of fine wood caps such as bamboo using this method.

Plating

Special metal aluminum is vacuumed with evaporation to adhere a metalized look to the products. Electroplating can improve the sense of quality and unusual feelings, again allowing your packaging to standout amongst the others.

Spraying Planting

UV coating not only enhances the sense of quality but also increases durability(hard coating, ultraviolet proofed). UV has a variety of different styles. Through small-batch and multi-variety production, innovative effect of the products will come true.

Aluminum

The product appearance is bright silver. Its full body shows metallic luster and texture. This craft can effectively highlight the packaging quality and play a major part in effect.

Hot Stamping

This method of printing can be gold foil, silver foil or a customized color and look transferred onto a plastic product by high temperature. The metal foil can be handled in various ways by special processing (dyeing, etc.). Hot stamping allows a product to be luxurious without the expense.

Maypak advises on the process, product ability and its related accessory to manufacture different colors, textures and appearances so your products will stand out.



With decades of experience behind us we can improve your COG, ROI and support your ongoing product needs and requirements.

包装全案解决方案

THREE SOLUTIONS

为了满足客户的多样化需求，美派为我们的客户精心准备定制需求。使用美派广泛的模具，您可以实现低成本而不牺牲效率。丰富多彩的功能性加工与艺术设计将标准产品转换为您想要的外观和质感。定制模具，达到客户设计和产品也是一种选择。我们设计和生产高品质的包装。

In order to meet the diverse needs of our customers, Maypak carefully prepares customized requirements for our customers. Using Maypak extensive molds you can achieve low cost without sacrificing efficiencies. Colorful and functional processing and art design transforms the standard products to your desired look and feel. Customization of molds to reach customers' visions of design and product is always an option. We design and produce quality packaging.

01

STANDARD

美派公模

We have a wide range of mold types to help you achieve high efficiencies and new product development little to no investment. Maypak considers the functionality of the product as well as convenience of use. We have developed thousands of models of bottles, jars, caps, pumps and sprayers including additional accessories.

Development of new products has been complicated in the past, causing problems affecting production time, budgets and minimum production quantity. Issues such as these are easily solved easily by using Maypak's current extensive offerings.

02

CUSTOMIZED

个性化定制

From simple low-cost products to decorative sophisticated high-end products, Maypak does it all and will manage the process from start to finish.

03

CUSTOM

美派私模

Our mission is to execute the customer's idea of appearance, function and quality. Utilizing a combined 80 years of operations experience you already are ahead of the game.

CONTENTS

目录

余姚市美派包装有限公司
Yuyao Maypak Packaging Co., Ltd.

2022

P.06 - P.15



手扣式喷雾器
Trigger Sprayers

P.16 - P.35



乳液泵 / 泡沫泵
Lotion Pumps / Foam Pumps

P.36 - P.41



小喷雾
Fine Mist Sprayers

P.42 - P.45



迷你喷雾器
Mini Sprayers

P.46 - P.49



粉泵
Treatment Pumps

P.50 - P.55



盖子
Caps

SM13E 手扣式喷雾器 Trigger Sprayers

HIGH-GRADE SPRAY BOTTLE

- Selection of high quality PP material. Ensure the safety of raw materials.
- Biodegradable, green, health and safe.
- Selection of fine atomization nozzle, spray evenly, the nozzle can spray 10,000 times, the use of a wide range of applications.
- Exquisite controllable leak-proof switch design, to avoid children touch chaos spray, the use of high safety.
- Fine nozzle in the press, the handle has back push help, repeated use will not make your fingers feel tired.

Discharge Rate:
0.26–0.30 ml/T

Closure:
24/410
28/410

Qty:
500pcs

Meas:
57x33x39cm

Color:
Custom color accepted



**Leak-proof latch
pulled down**



美派包装
MAYPAK PACKAGING
www.maypakcn.com

MayPak
美派包装

SM12B 手扣式喷雾器 Trigger Sprayers

PATENT NO. ZL 2012 3 0440001.X

- With unique locking device push close, push open.
- Usage:
Room fresheners/Perfumes/Personal care products/Hair sprays



SM12B01



SM12B02

Discharge Rate:
0.50-0.55 ml/T

Closure:



Smooth

24/410
28/410



Ribbed

28/410

QTY:500PCS/CTN
Meas:57x32x39cm

SM11

MayPak
美派包装



Twist Lock

SM1104

Discharge rate:0.3ml/T
Ø20/410, Ø24/410, Ø28/410



Push Lock

SM1105B

Discharge rate:0.3ml/T
Ø20/410, Ø24/410, Ø28/410

SM13



SM13A02

Discharge rate:0.15ml/T
Ø24/410



Push Lock

SM13C02-B

Discharge rate:0.3ml/T
Ø20/410, Ø24/410, Ø28/410



Aluminum
Available

SM13B

Discharge rate:0.25-0.30ml/T
Ø20/410, Ø24/410, Ø28/410



SM13F

Discharge rate:0.3ml/T
Ø20/410, Ø24/410, Ø28/410
QTY:450-500PCS/CTN
Meas:43x32x38CM

SM14

SM14



SM1410A

Discharge rate:1.20-1.40ml/T
QTY:400PCS/CTN
Meas:50x38x38CM



SM1410B

Discharge rate:1.20-1.40ml/T
QTY:400PCS/CTN
Meas:50x38x38CM



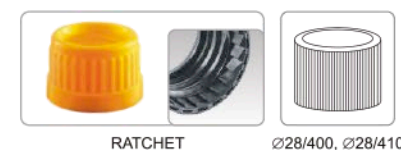
SM1410C

Discharge rate:1.20-1.40ml/T
QTY:400PCS/CTN
Meas:50x38x38CM

NOZZLE OPTIONS



CLOSURE OPTIONS



SM1412

Discharge rate:1.50ml/T
QTY:300PCS/CTN
Meas:59x40x31CM

NOZZLE OPTIONS



CLOSURE OPTIONS



SM1402

Discharge rate:1.20-1.40ml/T
QTY:400PCS/CTN
Meas:53x38x44CM



SM1411

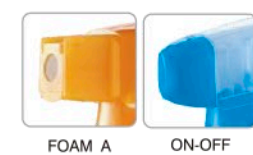
Discharge rate:1.20-1.40ml/T
QTY:400PCS/CTN
Meas:53x38x44CM



SM1413

Discharge rate:1.20-1.40ml/T
QTY:500PCS/CTN
Meas:53x38x44CM

NOZZLE OPTIONS



CLOSURE OPTIONS



SM1416

Discharge rate:0.90ml/T
QTY:400-450PCS/CTN
Meas:50x35x40CM



SM1417

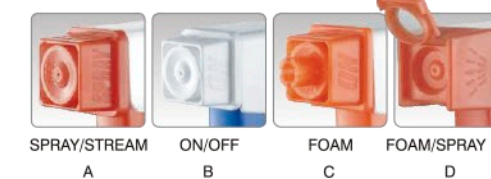
Discharge rate:0.90ml/T
QTY:400-450PCS/CTN
Meas:50x35x40CM



SM1418

Discharge rate:0.90ml/T
QTY:400-450PCS/CTN
Meas:50x35x40CM

NOZZLE OPTIONS



CLOSURE OPTIONS



SM14



SM1423

Discharge rate: 0.90ml/T
Closure: 28/410, 28/415, RATCHET
QTY: 350PCS/CTN
Meas: 57x33x39CM



SM1424

Discharge rate: 0.90ml/T
Closure: 28/410, 28/415, RATCHET
QTY: 500PCS/CTN
Meas: 57x33x39CM



SM1425

Discharge rate: 0.90ml/T
Closure: 28/410, 28/415, RATCHET
QTY: 450PCS/CTN
Meas: 57x33x39CM



SM1403

Discharge rate: 0.9-1.0ml/T
Closure: 28/400, 28/410
Function: SPRAY-STREAM-OFF
QTY: 625PCS/CTN
Meas: 60x38x40CM



SM1404

Discharge rate: 3.5 ± 0.15ml/T
Closure: 28/400, 28/410, 28/415
Function: SPRAY-STREAM-OFF
QTY: 300PCS/CTN
Meas: 45x39x57CM



SM1407

Discharge rate: 0.9-1.1ml/T
Closure: 28/400, 28/410
Function: SPRAY-STREAM-OFF
QTY: 500PCS/CTN
Meas: 57x39x42CM



SM1408

Discharge rate: 1.1 ± 0.1ml/T
Closure: 28/400, 28/410, 28/415
Function: SPRAY-STREAM-OFF
QTY: 400PCS/CTN
Meas: 45x39x57CM



SM1414

Discharge rate: 0.9 ± 0.1ml/T
Closure: 28/400, 28/410, 28/415
Function: SPRAY-STREAM-OFF
QTY: 450PCS/CTN
Meas: 45x39x57CM



SM1501

Discharge rate: 3.0-3.5ml/T
Closure: 28/400
QTY: 100PCS/CTN
Meas: 47x38x24CM

SM16



SM1601

Discharge rate: 0.75-0.80ml/T



SM1603

Discharge rate: 0.75-0.80ml/T



SM1604

Discharge rate: 0.75-0.80ml/T



SM1605

Discharge rate: 0.75-0.80ml/T



SM1606

Discharge rate: 0.75-0.80ml/T



SM1607

Discharge rate: 0.75-0.80ml/T



SM1609

Discharge rate: 0.75-0.80ml/T



SM1610

Discharge rate: 0.75-0.80ml/T



SM1611

Discharge rate: 0.75-0.80ml/T



SM1612

Discharge rate: 0.75-0.80ml/T



SM1613

Discharge rate: 0.75-0.80ml/T



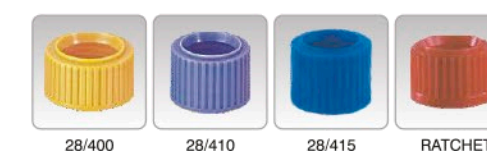
SM1614

Discharge rate: 0.75-0.80ml/T

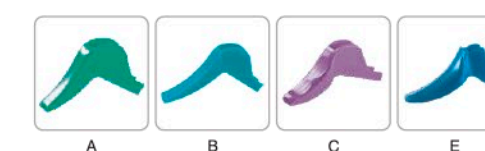
NOZZLE OPTIONS



CLOSURE OPTIONS



TRIGGER OPTIONS



SM18

手扣式喷雾器 塑料弹簧

Trigger Sprayers

ALL PLASTIC ENVIRONMENTAL PROTECTION

- All plastic design makes the product highly compatible, recyclable and environmentally friendly.
- Special plastic spring offers soft feeling when pull the trigger.
- Positive ventilation reducing risk of bottle deformation.
- Various screw type options.
- Foam nozzle available.
- Household cleaning products.
- Aggressive liquids.

Plastic Spring



SM1801



SM1802



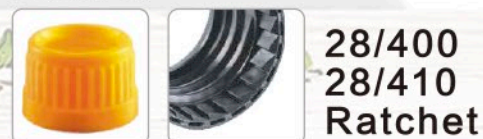
SM1803

Discharge Rate:
1.20-1.40 ml/T

Nozzle:



Closure:



QTY: 400PCS/CTN Meas: 54x38x38cm

All Plastic

SM18

Dual color shroud

双色设计 造型独特

MayPak
美派包装



SM1804
Discharge rate: 1.40ml/T
QTY: 500PCS/CTN
Meas: 60x38x44CM

NOZZLE OPTIONS



TRIGGER OPTIONS



CLOSURE OPTIONS



SM1805
Discharge rate: 1.20-1.40ml/T
QTY: 400PCS/CTN
Meas: 55x45x38CM



SM1806
Discharge rate: 1.20-1.40ml/T
QTY: 400PCS/CTN
Meas: 55x45x38CM

NOZZLE OPTIONS



CLOSURE OPTIONS



SM1810
Discharge rate: 1.00±0.05ml/T
Closure: Ø28/410
QTY: 400PCS/CTN
Meas: 54x38x38CM



SM1811
Discharge rate: 1.20 ml/T
Closure: Ø28/400, Ø28/410
QTY: 500PCS/CTN
Meas: 60x39x45CM

NOZZLE OPTIONS



SM2801

乳液泵 硅胶弹簧
Lotion pump

Plastic Spring

ALL PLASTIC ENVIRONMENTAL PROTECTION

- All plastic design makes the product highly compatible, recyclable and environmentally friendly.
- Ergonomic design in actuator and shape provides comfortable use feeling.
- Different closure options and shape processing procedure.
- Special structure design principle makes pump safer and widely using.

Twist lock

SM2801A

SM2801B

Discharge Rate:
2.5±0.2ml/T

Closure:



Smooth

24/410
28/410



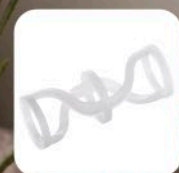
Ribbed

24/410
28/410

QTY: 1000PCS/CTN (24/410)
800PCS/CTN (28/410)

Meas: 54x38x38cm

Plastic Spring



Pom Ball



MayPak
美派包装

SM21

- Various styles of dispensing heads
- Designed for comfortable and easy use

Discharge rate:
1.20-1.50ml/T
Smooth / Ribbed / Aluminum

TWIST LOCK



Various styles of heads options



Various closure size options



Various aluminum shell options



- With the spring outside to eliminate contact of metal to product

Discharge rate:
2.00-2.20ml/T
Smooth / Ribbed / Aluminum

SM22 TWIST LOCK



A



B



D

Various styles of heads options



Ø24/410S



Ø24/415S



Ø28/400S



Ø28/410S



Ø24/410R



Ø24/415R



Ø28/400R



Ø28/410R

Various closure size options



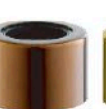
①



②



③



④



⑤



⑥



⑦



⑧



⑨



⑩

Various aluminum shell options

SM23



- Smooth and ribbed closures in all standard sizes as well as with aluminum shells over the closure.
- Many nozzle designs for easy of use.

Discharge rate:
1.80-2.00ml/T
Smooth / Ribbed / Aluminum

SCREW DOWN



A



B



C



D



E



F



H



J



L



N



O

Various styles of heads options



Ø20/410S



Ø24/410S



Ø24/415S



Ø28/400S



Ø28/410S



Ø20/410R



Ø24/410R



Ø24/415R



Ø28/400R



Ø28/410R

Various closure size options



①



②



③



④



⑤



⑥



⑦



⑧



⑨



⑩

Various aluminum shell options

SM25A



Ø33/410, Ø38/410
SM25A1
Discharge rate:
4.00±0.40ml/T



Ø33/410, Ø38/410
SM25A4
Discharge rate:
4.00±0.40ml/T



Ø33/410, Ø38/410
SM25A5
Discharge rate:
4.00±0.40ml/T



Ø33/410, Ø38/410
SM25A6
Discharge rate:
4.00±0.40ml/T



Ø33/410, Ø38/410
SM25A8
Discharge rate:
4.00±0.40ml/T



Ø33/410, Ø38/410
SM25A12
Discharge rate:
4.00±0.40ml/T



Ø33/410, Ø38/410
SM25A10
Discharge rate:
4.00±0.40ml/T



Ø33/410, Ø38/410
SM25A11
Discharge rate:
4.00±0.40ml/T



Ø33/410, Ø38/410
SM25A14
Discharge rate:
4.00±0.40ml/T



Ø33/410
SM25A15
Discharge rate:
4.00±0.40ml/T



Ø33/410, Ø38/410
SM25A16
Discharge rate:
4.00±0.40ml/T



Ø33/410, Ø38/410
SM25A17
Discharge rate:
4.00±0.40ml/T

NEW OPTIONS



ABS Closure

SM24

SCREW DOWN

— Usage:
Hair Care & Hair gel / Bath & Body Wash /
Kitchen detergent soap

Discharge rate:
2.00-2.20ml/T
Smooth / Ribbed / Aluminum



A



C



D



E



F



L

Various styles of heads options



Ø24/410S



Ø24/415S



Ø28/410S



Ø24/410R



Ø24/415R



Ø28/410R

Various closure size options



①



②



③



④



⑤



⑥



⑦



⑧



⑨



⑩

Various aluminum shell options

SM25A



Ø33/410, Ø38/410
SM25A18
Discharge rate:
4.00±0.40ml/T



Ø33/410, Ø38/410
SM25A19
Discharge rate:
4.00±0.40ml/T



Ø38/410
SM25A21-2
Discharge rate:
10cc, 20cc, 25cc, 30cc

SM25A



Ø28mm, Ø33mm
SM25A09
Discharge rate: 4.5cc



Ø28mm
SM25F10
Discharge rate: 4.5cc



Ø28mm, Ø33mm
SM25A11
Discharge rate: 4.5cc



Ø28mm, Ø33mm
SM25F12
Discharge rate: 4.5cc

Outside Spring



Ø24/410, Ø28/410
SM25F01
Discharge rate: 2.5cc



Ø24/410, Ø28/410
SM25F02
Discharge rate: 2.5cc



Ø24/410, Ø28/410
SM25F03
Discharge rate: 2.5cc



Ø24/410, Ø28/410
SM25F04
Discharge rate: 2.5cc

SM25C



Ø28/410
SM25C
Discharge rate: 4.00ml/T



Ø28/410
SM25C
Discharge rate: 4.00ml/T



Ø28/415
SM25C
Discharge rate: 4.00ml/T



Ø28/415
SM25C
Discharge rate: 4.00ml/T



Ø24/410, Ø28/410
SM25F05
Discharge rate: 2.5cc



Ø24/410, Ø28/410
SM25F06
Discharge rate: 2.5cc



Ø28mm, Ø33mm
SM25F07
Discharge rate: 4.5cc



Ø28mm, Ø33mm
SM25F08
Discharge rate: 4.5cc

SM26

HIGH OUTPUT



Ø24/410
SM2601
Discharge rate:
0.80-1.00ml/T



Ø24/415
SM2602
Discharge rate:
0.80-1.00ml/T



Ø28/400
SM2603
Discharge rate:
0.80-1.00ml/T



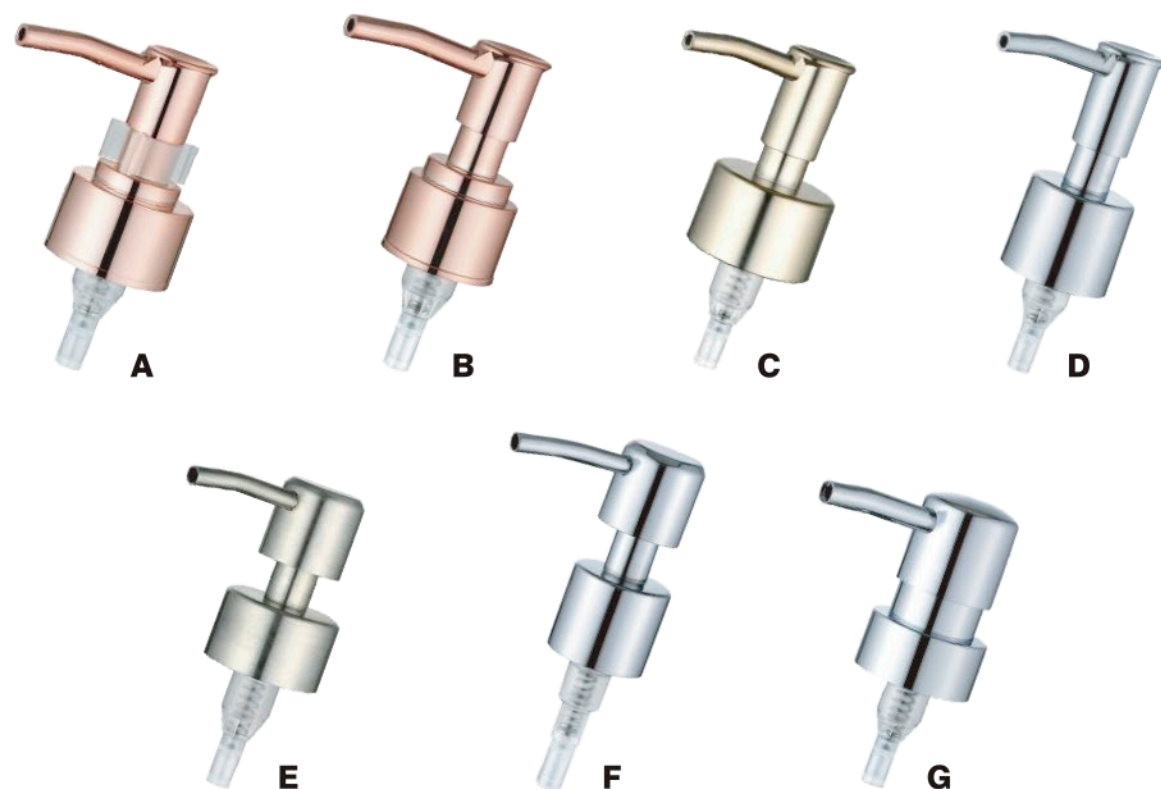
Ø28/410
SM2604
Discharge rate:
0.80-1.00ml/T

Bathroom Soap Pumps /卫浴乳液泵

SM2SE

SM25E01 ABS

Finish: GOLD, Chrome, Nickel, Matte, Black Nickel, Ceramic white, Antique Brass, UV Purple
UV Matte, Natural, UV Nickel, Oil Rubbed Bronze, Champagne, Brushed Nickel



SM25E02 Stainless Steel

Finish: Brushed SS, Brushed Nickel, Antique Brass, Oil Rubbed Bronze



SM27 卸妆泵 丁晴胶活塞 Cleansing Pumps

EIGHT STRENGTHS OF THE CLEANSING PUMP

- Customized super oil resistant imported material, guaranteeing the reliability of the product, and making it unprecedented.
- External springs and the full range of imported materials, having passed the SGS safety standard.
- Five lines of full-automatic testing, guaranteeing 100% quality product delivery.
- A negative pressure of 0.08MPa, eliminating leakage.
- Automatic liquid-collecting design to eliminate contamination by overflow.
- High-viscosity internal soluble matter being easily pumped out.
- Precise amounts delivered out, true to the name.
- Massive ergonomic data support, providing end uses with the best user experience.

Clip



NBR Piston



SM27G



SM27H

Discharge Rate:
0.90-1.10 ml/T

Closure:
24/410



NBR Piston



PE Piston



SM27 卸甲油泵 Nail Polish Remover Pump Dispensers

EIGHT STRENGTHS OF THE NAIL POLISH REMOVER PUMP DISPENSER

- Customized super oil resistant imported material, guaranteeing the reliability of the product, and making it unprecedented.
- External springs and the full range of imported materials, having passed the SGS safety standard.
- Five lines of full-automatic testing, guaranteeing 100% quality product delivery.
- A negative pressure of 0.08MPa, eliminating leakage.
- Automatic liquid-collecting design to eliminate contamination by overflow.
- High-viscosity internal soluble matter being easily pumped out.
- Precise amounts delivered out, true to the name.
- Massive ergonomic data support, providing end uses with the best user experience.



Nail Polish Remover Pump Dispensers /卸甲油泵 **SM27**



Ø33mm

SM27N

Discharge rate:0.50-0.55ml/T



Ø24mm

SM270

Discharge rate:0.50-0.55ml/T

Nail Remover Sets



Ø24/410, Ø33/410

SM27J-A



Ø33/410

SM27J-C

SM32 泡沫泵瓶 *Foaming Dispenser Bottles*

Environmental / Durable / Health / Safety

- Pumps all use PP that is safe, environmental protection, non-toxic and tasteless.
- The characters are easy and delicate foaming.



SM31

SM31



Outside Spring





SM3201
Closure: Ø28mm
Capacity: 40ml, 60ml, 80ml



SM3202
Closure: Ø30/410
Capacity: 30ml, 50ml, 80ml, 100ml



SM3206
Closure: Ø43/410
Capacity: 250ml, 450ml



SM3209
Closure: Ø43/410
Capacity: 130ml, 150ml, 200ml, 220ml



SM3203
Closure: Ø40/410
Capacity: 250ml



SM3204
Closure: Ø43mm
Capacity: 100ml, 120ml, 150ml, 200ml, 300ml



SM3211
Closure: Ø40/410
Capacity: 250ml



SM3212
Closure: Ø20/410
Capacity: 30ml, 50ml

SM32

SM32



SM3213
Closure: Ø43mm
Capacity: 185ml



SM3214
Closure: Ø43mm
Capacity: 300ml



SM3217
Closure: Ø40mm
Capacity: 250ml



SM3218
Closure: Ø43mm
Capacity: 300ml



SM3215
Closure: Ø43mm
Capacity: 300ml



SM3216
Closure: Ø43mm
Capacity: 300ml



SM3219
Closure: Ø43mm
Capacity: 300ml



SM3220
Closure: Ø40mm
Capacity: 500ml

SM48

小喷雾 外置弹簧

Fine Mist Sprayers

Outside Spring

OUTSIDE SPRING

- High Output and Outside Spring.
- Usage:
Room fresheners/Perfumes/Personal care products

Outside Spring



Discharge Rate:
0.30–0.35 ml/T

Closure:



18/410
20/410
24/410



20/410
24/410

SM46

MayPak
美派包装



SM4601
Closure: Ø18/410



SM4603
Closure: Ø20/410



SM4604
Closure: Ø20/410



SM4605
Closure: Ø22/415



SM4606
Closure: Ø22/415



SM4607
Closure: Ø24/410



SM4608
Closure: Ø24/410



SM4609
Closure: Ø24/415



SM4610
Closure: Ø24/415



SM4611
Closure: Ø28/410

**Oil & Gel Spray
for Viscous products**

喷油小喷雾系列

Discharge Rate:
0.17–0.22 ml/T

- Available in a wide range of closures
- Excellent spray pattern
- High variety of inserts
- Compatible with difficult formulations
- It was specially created for aggressive formulas and high-viscosity products.



VARIOUS ALUMINUM SHELL OPTIONS



360 Degree UD Spray

SM42

- Smooth and ribbed closures in all standard sizes as well as with aluminum shells over the closure.
- Various Aluminum shell options

Discharge rate:

0.15-0.18ml/T

Smooth / Ribbed / Aluminum



Round Top

Flat Top

K Resin

Full Cap



SM43

- Design for low and medium viscosity products
- Usage: Sun care products / Spray Gel / Glitter Spray
- Various Aluminum shell options

Discharge rate:

0.20-0.30ml/T

Smooth / Ribbed / Aluminum



Round Top

Flat Top



SM44

Smooth / Ribbed / Aluminum



SM45

EXTENDED SPRAY



VERTICAL SPRAY



SM45



SM47

ABS Shell UV Coating Closure



HV Mist Sprayer



SM41



SM52

SM52



10ml
SM5201-10



15ml
SM5201-15
PATENT NO. ZL 2012 3 0429144.0



15ml
SM5201-15B



20ml
SM5205



20ml
SM5206



10ml/15ml
SM5208



10ml/15ml
SM5209



20ml
SM5201-20A



20ml
SM5201-20C



20ml
SM5201-20E



20ml
SM5201-20F

SM5202

SNAP ON SPRAY WITH LOCKING ACTUATOR

圆筒喷雾瓶 30ml

Snap on spray



25ml
SM5201-25B



25ml
SM5201-25C



28ml
SM5201-28A



20ml
SM5204



Mini Sprayers /迷你喷雾器

SM51



SM5101



SM5102



SM5103



SM5104



SM5105



SM5106



SM5108



SM5109



SM5111



SM5214

SM53

可持续喷雾器

Sustainable sprayer

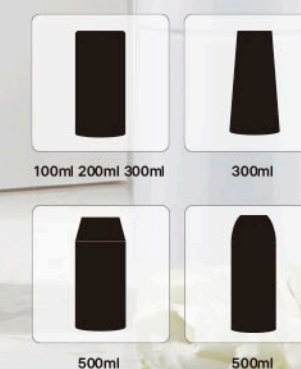
SIX STRENGTHS OF THE SUSTAINABLE SPRAYER

- ① Misty-like spray adheres evenly and perfectly to all kind of surfaces.
- ② Liquid is expelled with aplomb thanks to pre-compression technology.
- ③ Large areas are covered quickly and easily, without gaps.
- ④ The bag-in-bottle allows 360° spraying for those difficult reach areas.
- ⑤ Total air isolation means no contamination and better product compounds.
- ⑥ No wastage with close to 99% liquid evacuation.

SM53-1



BOTTLE OPTIONS



SM53-2

200ml, 250ml, 360ml, 500ml



250ml

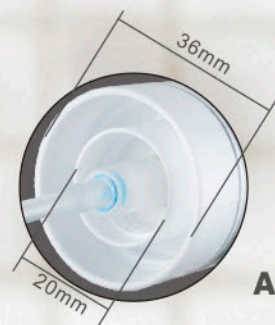


SM66 UPG 乳液泵 / UPG 喷雾器

UPG Pumps / UPG Sprayers

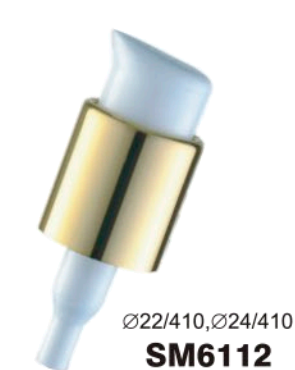
SMOOTH / UV COATING

- High Grade PP Resin Made Pump, Nanotechnology, Fine Mist Spray.
- Dust Cover Design To Prevent Dust To Come Into The Nozzle.
- PETG,PP,AS Environmental Protection Materials.
- Tough And Durable, Safe And Sanitary, High Glossiness, Recycled.



SM61

MayPak
美派包装



Outside Spring



SM61



Ø18/410
SM6113



Ø20/410
SM6117



Ø20/410
SM6119



Ø18/410
SM6122



Ø18/410
SM6124



Ø18/410
SM6125

SM62



Ø18/410, Ø18/415
Ø20/410, Ø20/415
SM6202



Ø18/410
SM6205



Ø18/410, Ø20/410, Ø24/410
SM6207

SM64



Ø20/410, PP
SM6401



Ø24/410, PP
SM6403



Ø24/410, UV coating
SM6406

SM64



Ø24/410, Aluminum
SM6409



Ø24/410, Outside Spring
SM6410



Ø24/410
SM6411



Ø18/410
SM6415



Ø20/410
SM6416



Ø24/410
SM6417



Ø20/410
SM6418

SM65



Ø18/415, PP
SM6501



Ø18/415, Aluminum
SM6502



Ø20/410, PP
SM6504



Ø24/410, Aluminum
SM6505



塑料盖 (ABS电镀外圈/水转印工艺)

Plastic Caps—ABS Shell UV Coating / Water Transfer

CUSTOM DESIGN ACCEPTABLE

The reasons why aluminum shelled caps can be replaced by ABS ones

- Eco-friendly
- Shorter delivery time
- Uneasy to be scratched
- Lower price

The advantages of hydrographic transfer printing

- Wood grain effect
- Variety of wood grain



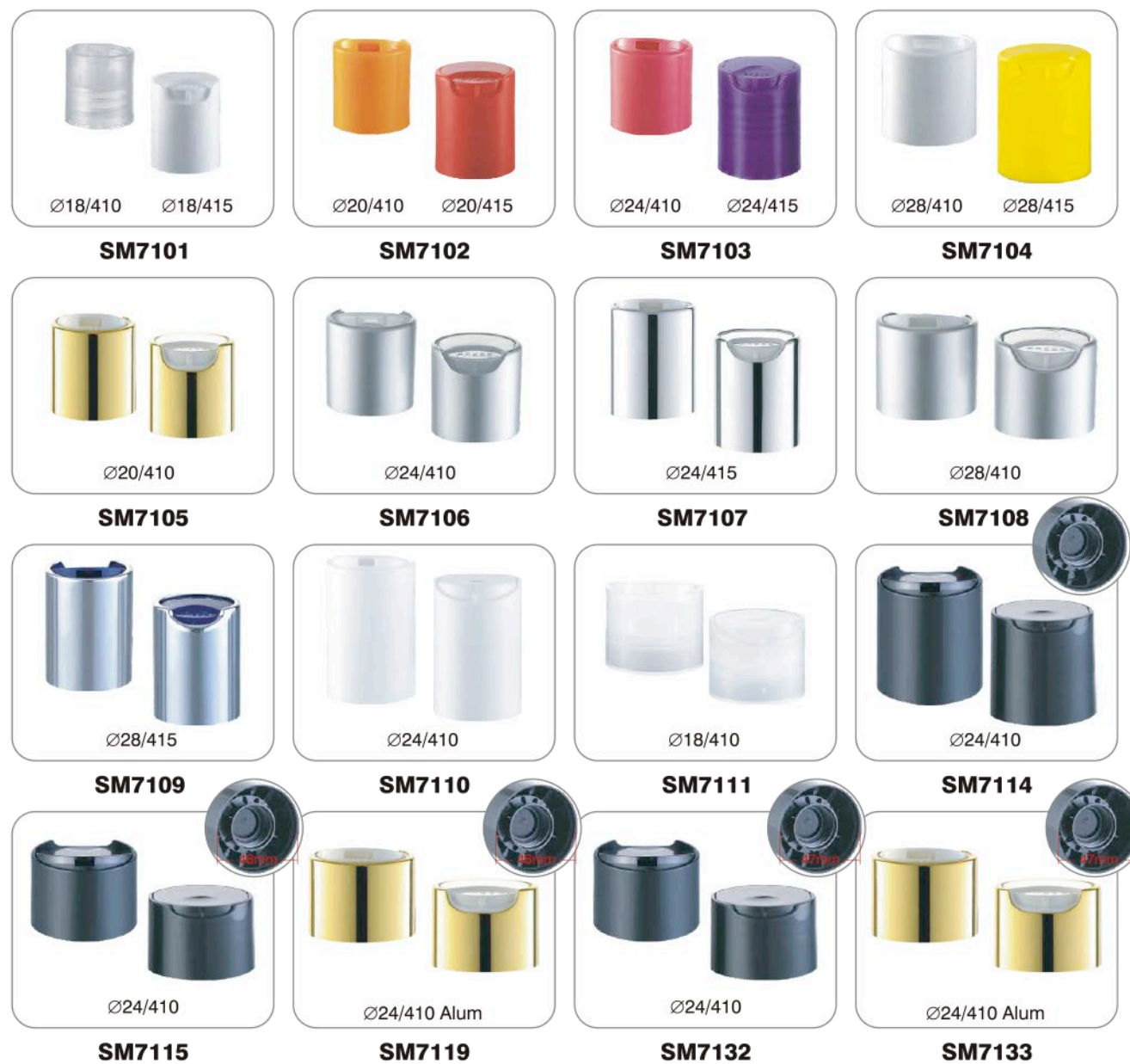
ABS Shell UV Coating Caps



Water Transfer Caps



Disc Top Caps



Screw Caps



Flip Top Caps



Flip Top Caps



Push Pull & Twist Caps



Other Caps

